

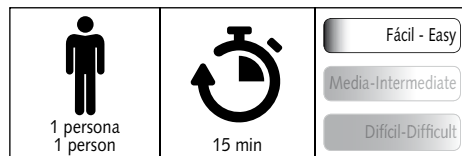
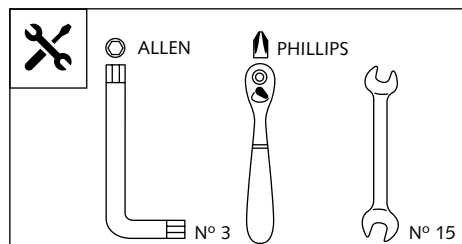
## PARAMANOS PARA - HANDPROTECTORS FOR - HANDSCHUTZ FÜR HONDA NC750X/S '12 - '16-

CAMBIO STANDARD SÍ - DCT, CAMBIO AUTOMÁTICO NO / SHIFTING GEARS STANDARD YES, DCT, SHIFTING GEARS AUTOMATIC NO



**Ref.: 8549 J**  
(Color negro/Black colour)

**Ref.: 8549 C**  
(Color carbono/Carbon look)

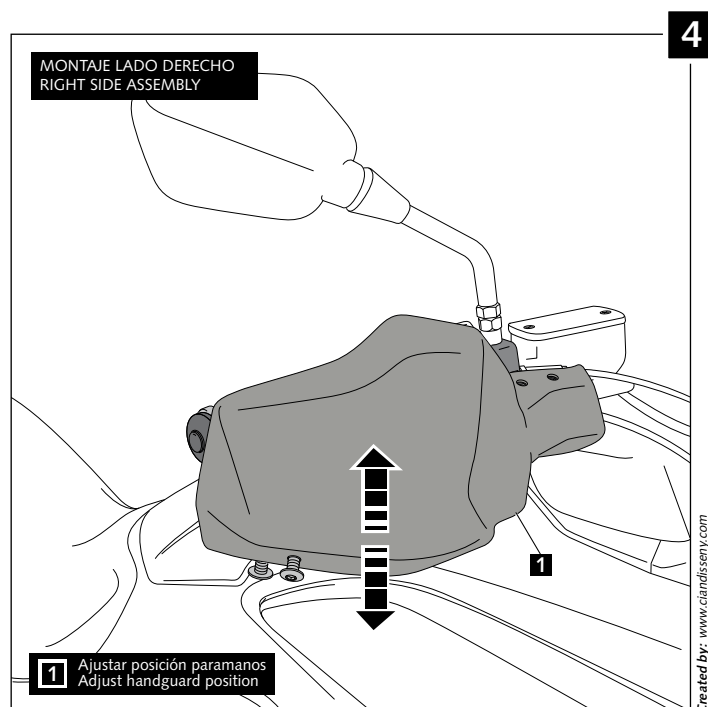
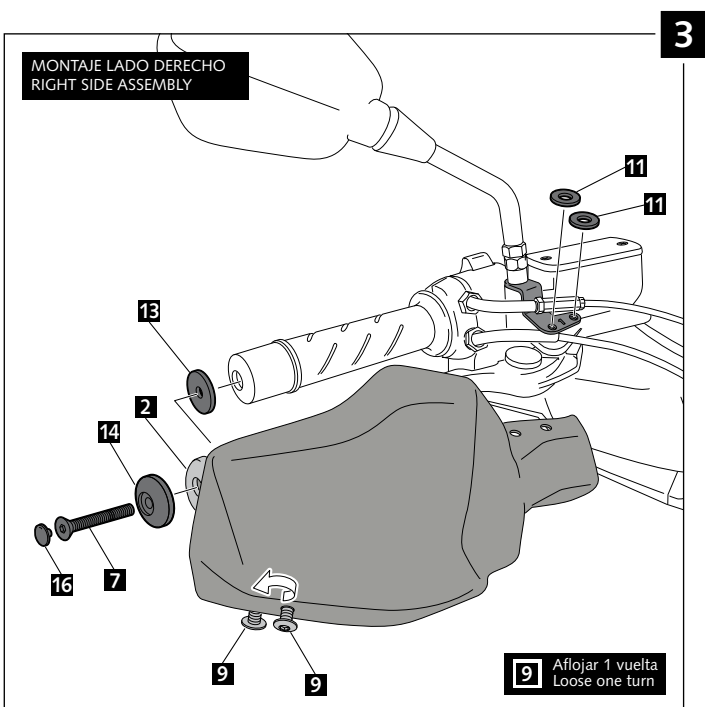
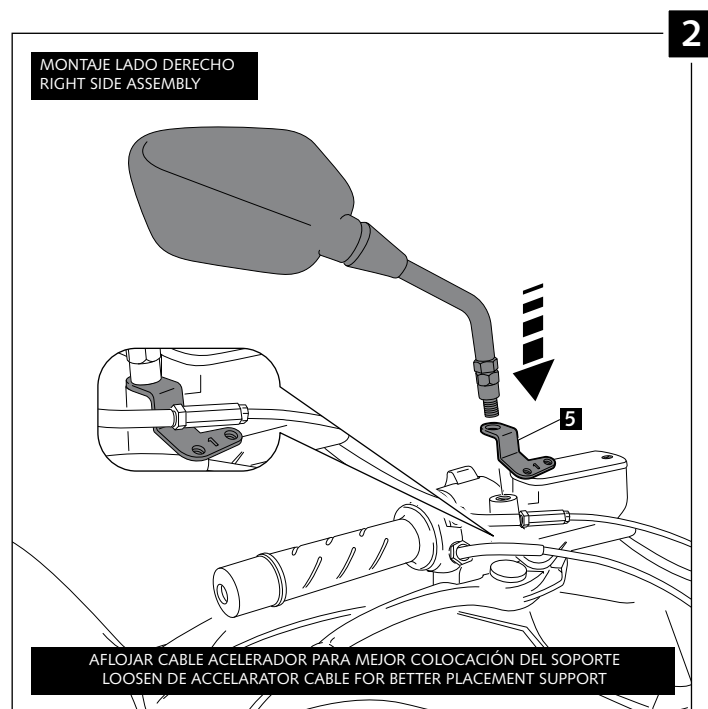
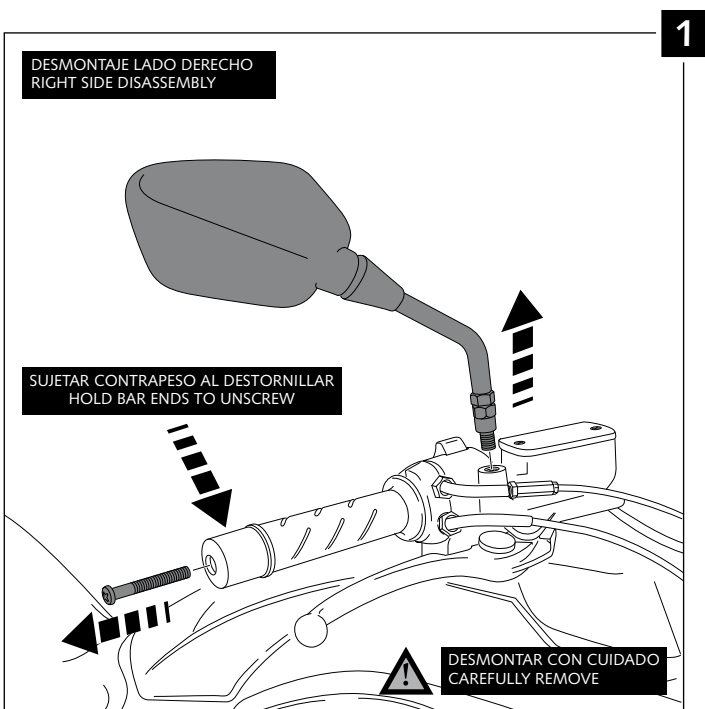


ID	PIEZA / PART	DESCRIPCIÓN	DESCRIPTION	QTY	REF.
1		Paramanos derecho	Right handguard	1	8549J/CM3
2		Pieza derecha anclaje manillar Ø6.5 (se suministra montada)	Ø6.5 right handlebar anchoring part (supplied mounted with handguard)	1	8549J/CM3
3		Paramanos izquierdo	Left handguard	1	8549J/CM3
2		Pieza izquierda anclaje manillar Ø6.5 (se suministra montada)	Ø6.5 left handlebar anchoring part (supplied mounted with handguard)	1	8549J/CM3
5		Soporte metálico 1 (Soporte drecho e izquierdo '16- / Soporte derecho '12-'15)	Metal support 1 (Right & Left support '16- / Right support '12-'15)	2	SOPOR-3P-4-8549
6		Soporte metálico 2 (Soporte Izquierdo '12-'15)	Metal support 2 (Left support '12-'15)	1	SOPOR-3P-4-8549
7		Soporte metálico 3 (Soporte Izquierdo '16-)	Metal support 3 (Left support '16-)	1	SOPOR-3P-4-8549
8		Tornillo Allen M6x75 DIN 7991	M6x75 DIN 7991 Allen screw	2	TORNI-D7991-735
9		Tornillo Allen M5x11 ISO 7380	M5x11 ISO 7380 Allen screw	8	TORNI-AI----520
10		Arandela de Nylon M5x1	M5x1 Nylon washer	8	ARNV00000000245
11		Arandela de goma Ø4,5xØ11,5x2mm	Ø4,5xØ11,5x2mm Rubber washer	8	ARAND-EPDM--722
12		Tuerca grafilada M5 (se suministra montada con las piezas 1-2-3-4)	M5 Special nut (supplied already mounted on items 1-2-3-4)	4	TUERC-D6923-255
13		Arandela de goma Ø30xØ6,5x1mm	Ø30xØ6,5x1mm Rubber washer	2	ARAND-----736
14		Arandela de plástico Ø30 x Ø6	Ø30 x Ø6 plastic washer	2	ARAND-PN6X30-67
15		Tapón tornillo M5 ISO 7380	M5 ISO 7380 Allen screw cap	8	TAPON-----85
16		Tapón tornillo M6 DIN 7991	M6 DIN 7991 Allen screw cap	2	TAPON-----81
17		Kit adhesivos	Stickers set	1	ADHESI-----234

PARAMANOS PARA - HANDPROTECTORS FOR - HANDSCHUTZ FÜR  
**HONDA NC750X/S '12 - '16-**

CAMBIO STANDARD SÍ - DCT, CAMBIO AUTOMÁTICO NO / SHIFTING GEARS STANDARD YES, DCT, SHIFTING GEARS AUTOMATIC NO

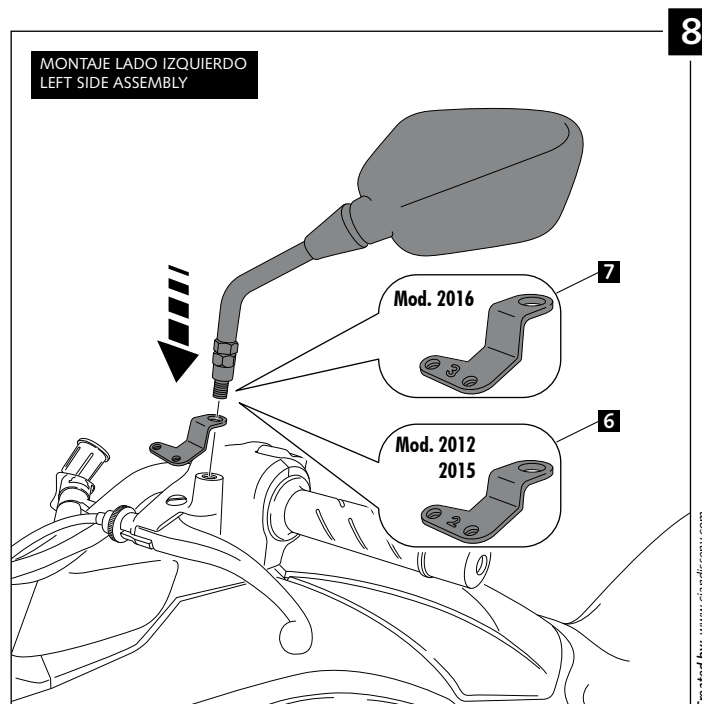
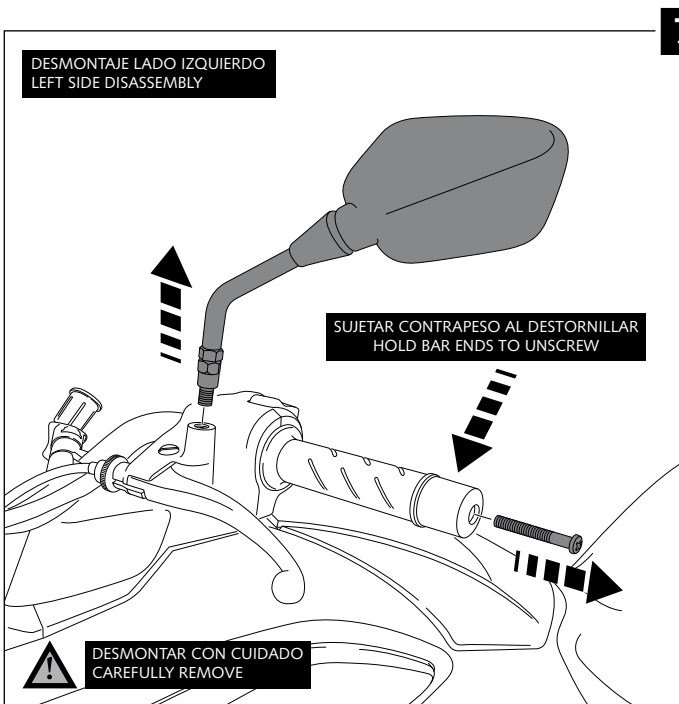
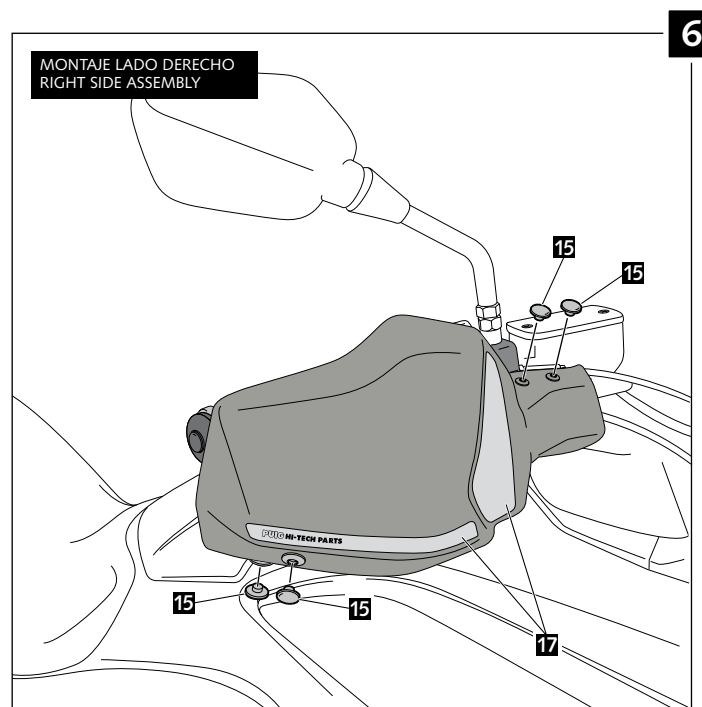
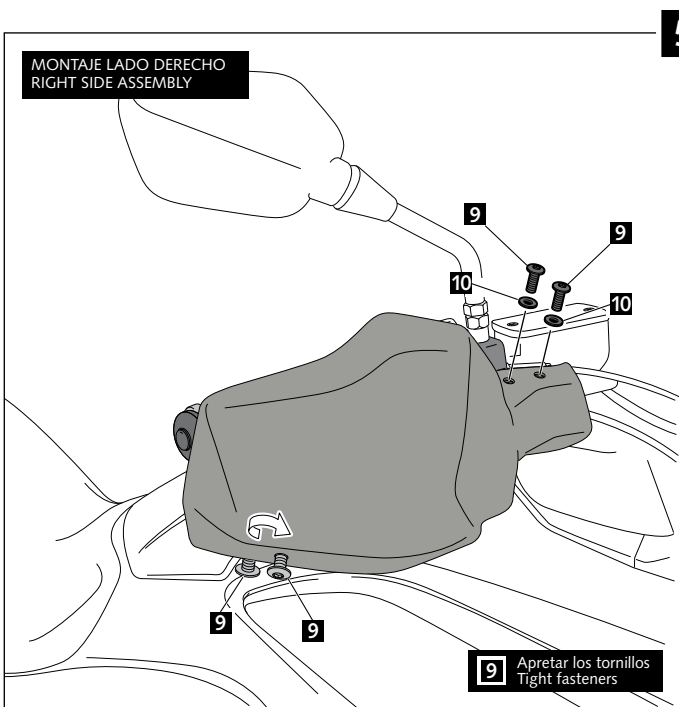
INSTRUCCIONES DE MONTAJE - MOUNTING INSTRUCTIONS - MONTAGEANLEITUNG



PARAMANOS PARA - HANDPROTECTORS FOR - HANDSCHUTZ FÜR  
**HONDA NC750X/S '12 - '16-**

CAMBIO STANDARD SÍ - DCT, CAMBIO AUTOMÁTICO NO / SHIFTING GEARS STANDARD YES, DCT, SHIFTING GEARS AUTOMATIC NO

INSTRUCCIONES DE MONTAJE - MOUNTING INSTRUCTIONS - MONTAGEANLEITUNG



PARAMANOS PARA - HANDPROTECTORS FOR - HANDSCHUTZ FÜR  
**HONDA NC750X/S '12 - '16-**

CAMBIO STANDARD SÍ - DCT, CAMBIO AUTOMÁTICO NO / SHIFTING GEARS STANDARD YES, DCT, SHIFTING GEARS AUTOMATIC NO

INSTRUCCIONES DE MONTAJE - MOUNTING INSTRUCTIONS - MONTAGEANLEITUNG

